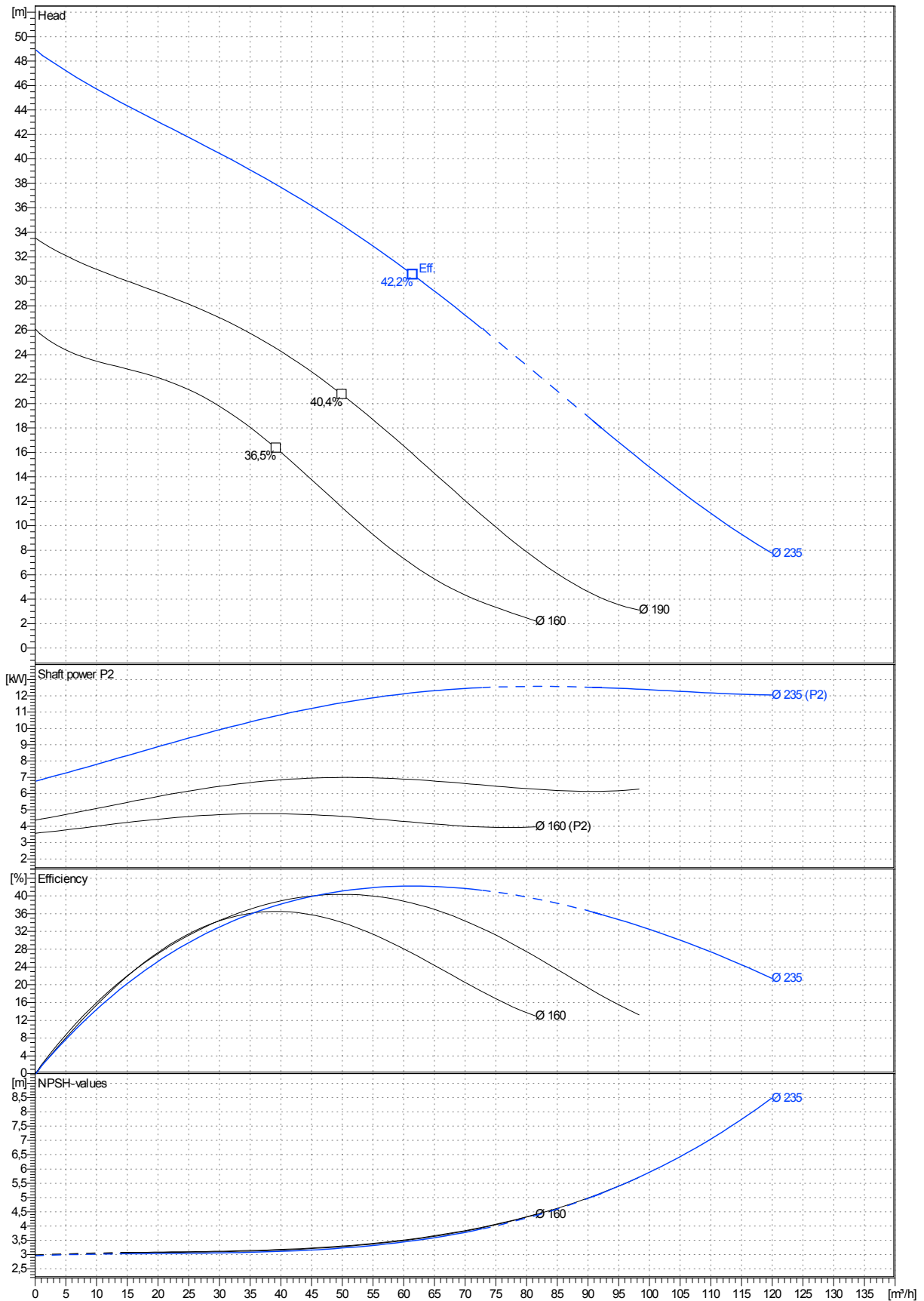


data referred to : Water, pure [100%] ; 20°C; 0,9983kg/dm³; 1,005mm²/s

Tolerances acc. ISO 9906 Annex A



Curves are approximate, pump is guaranteed for one set of conditions (capacity, head, efficiency).

Submersible, centrifugal, non-clogging sewage pump PX2- 80.0-2 VORTEX 1 capable of handling raw,unscreened sewage.

The pump can be capable of operating continuously in submersed or dry installed condition due the internal cooling system (standard version).

An internal impeller, fitted between the mechanical shaft seal, circulate a cooling liquid (Ecoflu) in a closed loop through a cooling jacket, and transfer the heat to the pumped liquid by a cooling flange (heat exchange).

The pumps manufactured within European Union with the latest manufacturing and environmental standards and practical standard features as :

-Electrical motor PXFLOW -SIEMENS with highest energy saving norm EFF1 have Class F insulation (rated for 155 degrees Celsius)as standard (Class H as option),three thermal overload switches, one per phase, internally wound to combat high temperature loads.

-Built-in moisture sensors

-Vortex impeller made in ductile iron GGG40 are of non clogging design

-Channel and vortex impellers can be accommodated in the same volute. This advance together with possibility to be trimmed allow to meet changing duties.

-Rotor shaft oversized made in stainless steel and oversized ball bearings ensuring smooth and vibration free running with extended life time as result.

-Shaft sealing system consist of double mechanical seals built into a replaceable cartridge facilitate quick changes even on-site without special tools.

-Wear rings with 'reducer' clearances system allow to be re-positioned axially in order to reduce the clearances between the channel impeller and volute.

-Fast lock connection system latch bolts made in stainless steel for easy removal of the motor together with impeller from the volute.

Materials

Motor housing, volute :cast iron GG -25

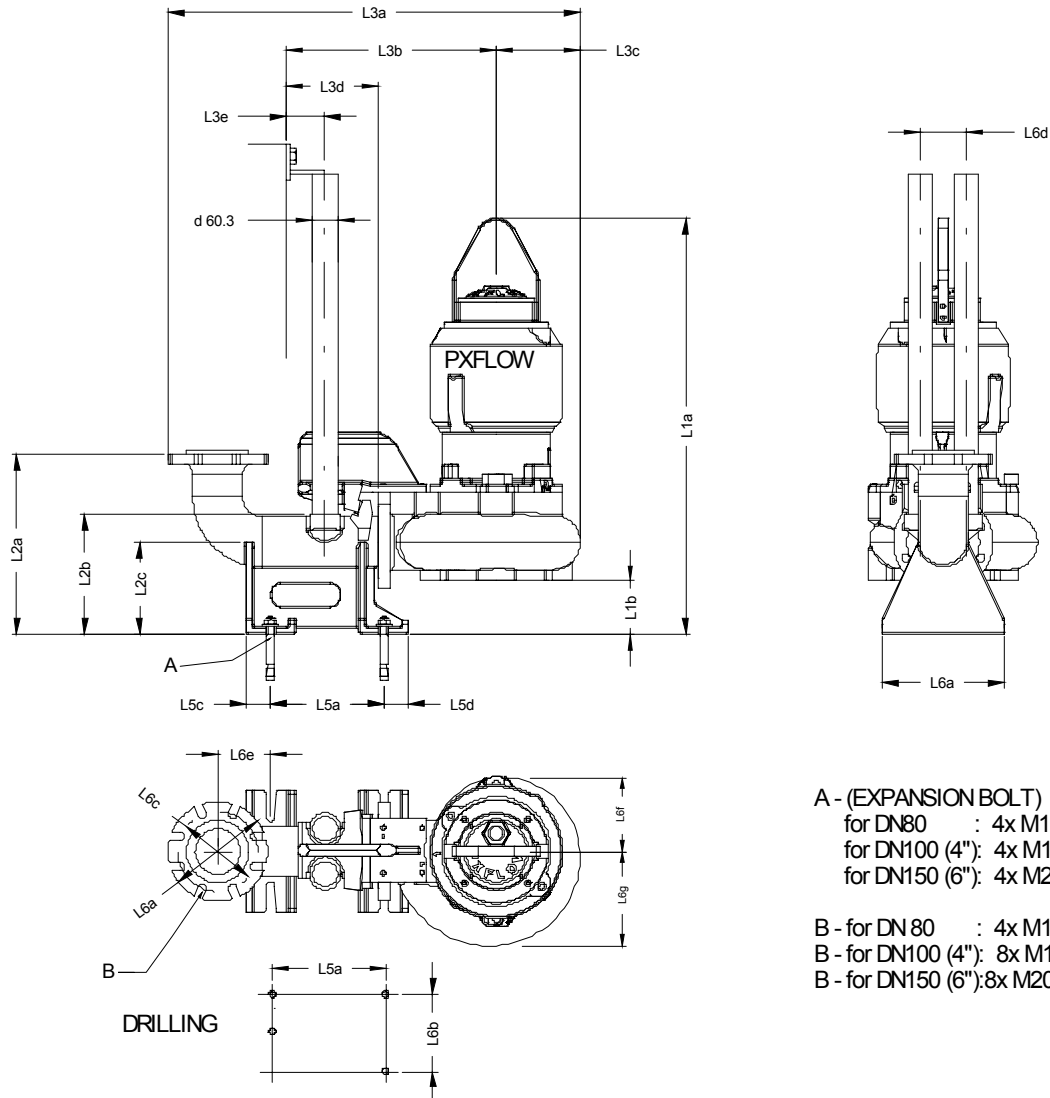
Impeller, adapter: ductile iron GGG40

Shaft, cartridge sleeve :stainless steel 431

Shaft seal:Media side sic/sic
Cooling side sic/carbon

Bearings:upper:single row deep groove ball bearing
lower: double angular contact ball bearing

PX2- 80.0-2 VORTEX 1 with motor M2.2- 12,5 / 2



A - (EXPANSION BOLT)
for DN80 : 4x M12x120
for DN100 (4"): 4x M16x140 (5/8"x5.5")
for DN150 (6"): 4x M20x200

B - for DN 80 : 4x M16
B - for DN100 (4"): 8x M16 (5/8")
B - for DN150 (6"): 8x M20

Dimensions	mm	Dimensions	mm
L1a	908	L5d	60
L1b	112	L6a	270
L2a	405	L6b	220
L2b	265	L6c	180
L2c	200	L6d	100
L3a	915	L6e	112
L3b	470	L6f	178
L3c	195	L6g	211
L3d	205		
L3e	90		
L3f	355		
L5a	250		
L5b	170		
L5c	50		

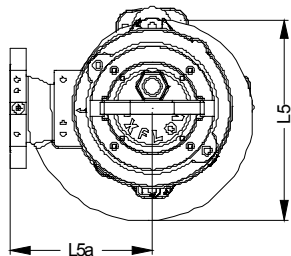
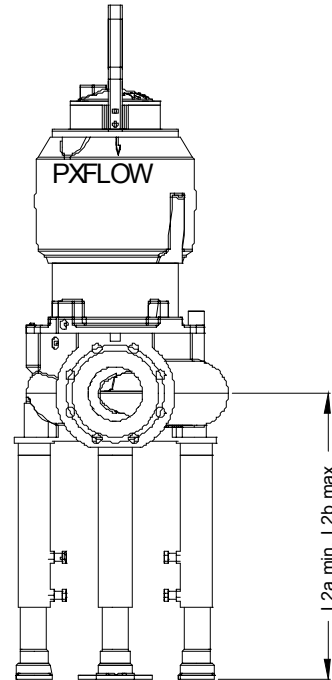
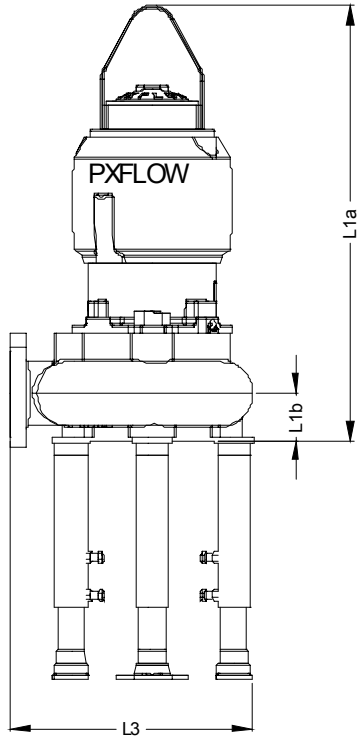
For Discharge connection bracket :
Outlet flange - Standard : DN100 / PN10 Flange
- Option : 4" ANSI class 125
- Option : DN80 / PN10 Flange
- Option : 3" ANSI class 125

For pump :
Outlet flange - Standard : DN80 / PN16
- Option : 3" ANSI class 125

Suction flange - Standard : DN80 / PN16
- Option : 3" ANSI class 125

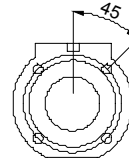
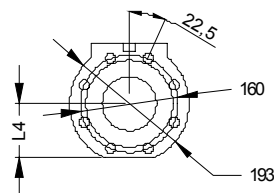
Weight of Pump with cooling jacket = 165 kg
(without cooling jacket : - 20 kg)
Weight of Adapter = 0 kg

PX2- 80.0-2 VORTEX 1 with motor M2.2- 12,5 / 2



Standard
DN80 PN10
8xM16

Option
3" class 125
4xM16



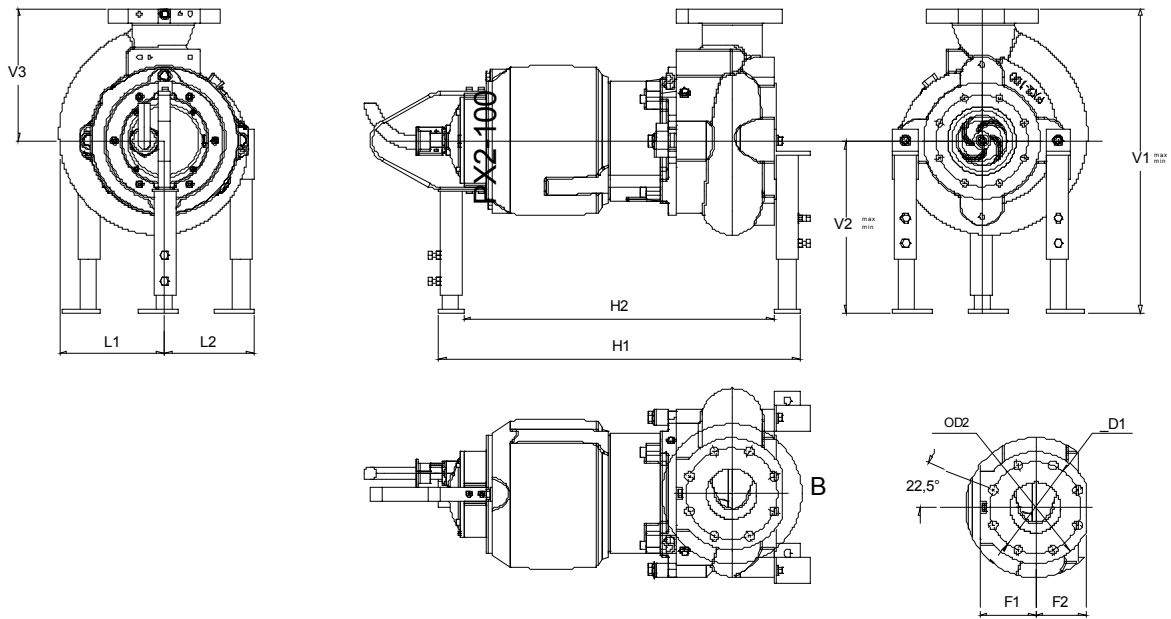
Dimensions	mm	Dimensions	mm
L1a	810		
L1b	70		
L2max	450		
L2min	350		
L3	450		
L4	95		
L5	350		
L5a	265		

Outlet flange - Standard : DN80 / PN16
- Option : 3" ANSI class 125

Suction flange - Standard : DN80 / PN16
- Option : 3" ANSI class 125

Weight of Pump with cooling jacket = 165 kg
Weight of Adjustable Legs = 0 kg

PX2- 80.0-2 VORTEX 1 with motor M2.2- 12,5 / 2



Dimensions	mm	Dimensions	mm
L1a	908	L5d	60
L1b	112	L6a	270
L2a	405	L6b	220
L2b	265	L6c	180
L2c	200	L6d	100
L3a	915	L6e	112
L3b	470	L6f	178
L3c	195	L6g	211
L3d	205		
L3e	90		
L3f	355		
L5a	250		
L5b	170		
L5c	50		

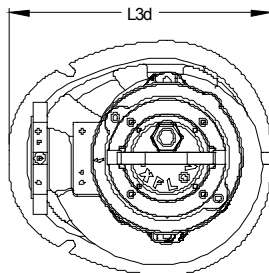
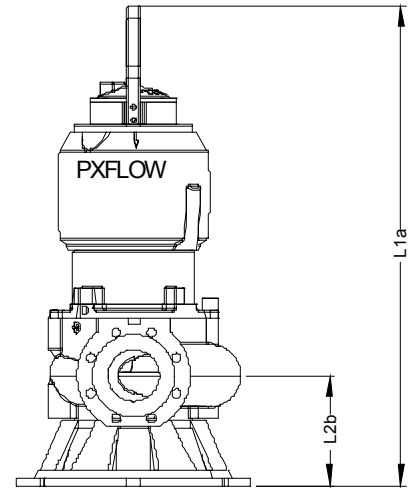
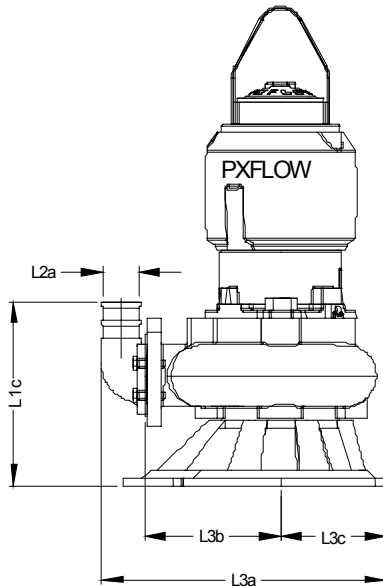
For Discharge connection bracket :
 Outlet flange - Standard : DN80 / PN10 Flange
 - Option : 3" ANSI class 125
 - Option : DN100 / PN10 Flange
 - Option : 4" ANSI class 125

For pump :
 Outlet flange - Standard : DN80 / PN10
 - Option : 3" ANSI class 125
 - Option : DN65 / PN10
 - Option : 2,5" ANSI class 125

Suction flange - Standard : DN80 / PN10
 - Option : 3" ANSI class 125
 - Option : DN65 / PN10
 - Option : 2,5" ANSI class 125

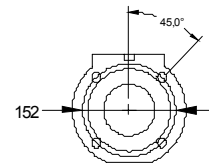
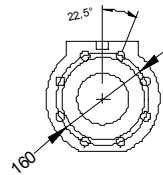
Weight of Pump with cooling jacket = 165 kg

PX2- 80.0-2 VORTEX 1 with motor M2.2- 12,5 / 2



Standard
DN80 PN10
8xM16

Option without discharge bend
3" class 125
4xM16



Dimensions	mm	Dimensions	mm
L1a	818		
L1b	179		
L1c	335		
L2a	76		
L3a	603		
L3b	265		
L3c	250		
L3d	500		

Outlet for hose - Option : Ø 80mm (3")
 For pump :
 Outlet flange - Standard : DN80 / PN16
 - Option : 3" ANSI class 125
 Suction flange - Standard : DN80 / PN16
 - Option : 3" ANSI class 125

Weight of Pump with cooling jacket = 165 kg
 (without cooling jacket : - 20 kg)
 Weight of Base for Transportable = 8,7 kg