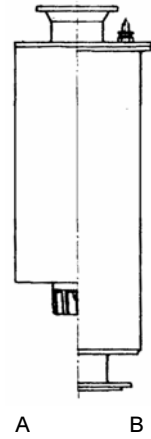
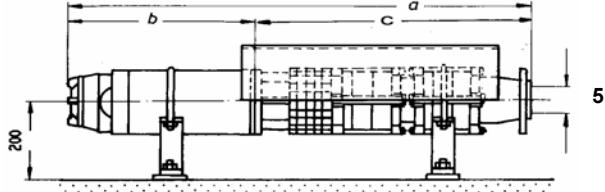


Σύνδεση με τον καταθλιπτικό αγωγό / piping connection					
αφ. Στοιχίου Figure	Στόμιο εξαγωγής με αντεπίστροφη βαλβίδα Non-Return Valve	Στόμιο εξαγωγής χωρίς βαλβίδα Taper	Μήκος Length e mm	Βάρος Weight kg	τοποθέτηση Installation
1	G3		200	12	v
1	G4		200	13	v
		G3	56	4	h+v



A : cooling shroud  
B : pressure shroud (Booster)

Curve	Αντλία + Κινητήρας Pump + Motor	ονομαστ. στοιχεία Κινητήρα Motor rated data					max Ø mm	Μήκος / Length			Βάρος / Weight			τοποθέτηση Installation	Καλώδια κινητήρα Motor leads		Μανδύας ψύξης/πίεσης cooling/pressure Shroud		
		P kW	HP	I (400V) A	Ø mm	a unit mm		b motor mm	c pump mm	unit kg	motor kg	pump kg	απευθείας direct		Y-Δ star-delta	D mm	L mm	kg	
																			Y-Δ
2	NB85- 2 + M6-200	7,5	10	17,2	144	192	1032	594	438	67	42	25	h+v	1FL 4x2,5	2FL 3/4x2,5	1)	1)	1)	
3	NB85- 3 + M6-270	11	15	24	144	192	1157	664	493	77	49	28	h+v	1FL 4x2,5	2FL 3/4x2,5	1)	1)	1)	
4	NB85- 4 + M6-270	11	15	24	144	192	1212	664	548	80	49	31	h+v	1FL 4x2,5	2FL 3/4x2,5	1)	1)	1)	
5	NB85- 5 + M6-340	15	20	32	144	192	1337	734	603	91	57	34	h+v	1FL 4x4	2FL 3/4x2,5	1)	1)	1)	
6	NB85- 6 + M6-400	18,5	25	39	144	192	1452	794	658	101	64	37	h+v	1FL 4x4	2FL 3/4x2,5	1)	1)	1)	
7	NB85- 7 + M6-400	18,5	25	39	144	192	1507	794	713	104	64	40	h+v	1FL 4x4	2FL 3/4x2,5	1)	1)	1)	
8	NB85- 8 + M6-460	22	30	46,5	144	192	1622	854	768	113	70	43	h+v	1FL 4x6	2FL 3/4x2,5	1)	1)	1)	
9	NB85- 9 + M6-530	26	35	54	144	192	1869	924	945	141	78	63	h+v	1FL 4x6	2FL 3/4x2,5	1)	1)	1)	
10	NB85-10 + M6-600	30	40	62	144	192	1994	994	1000	152	86	66	h+v	1FL 4x10	2FL 3/4x4	1)	1)	1)	
11	NB85-11 + M6-600	30	40	62	144	192	2049	994	1055	155	86	69	h+v	1FL 4x10	2FL 3/4x4	1)	1)	1)	
12	NB85-12 + M6-650	33	45	68	144	192	2154	1044	1110	164	92	72	h+v	1FL 4x10	2FL 3/4x4	1)	1)	1)	
13	NB85-13 + M6-720	37	50	76	144	192	2279	1114	1165	174	99	75	h+v	1FL 4x10	2FL 3/4x4	1)	1)	1)	
14	NB85-14 + M6-720	37	50	76	144	192	2334	1114	1220	177	99	78	h+v	1FL 4x10	2FL 3/4x4	1)	1)	1)	
15	NB85-15 + M8-480	46	62	90	190	195	2586	1188	1398	245	154	91	h+v	1FL 4x16	2FL 3/4x6	1)	1)	1)	
16	NB85-16 + M8-480	46	62	90	190	195	2641	1188	1453	248	154	94	h+v	1FL 4x16	2FL 3/4x6	1)	1)	1)	
17	NB85-17 + M8-480	46	62	90	190	195	2818	1188	1630	268	154	114	h+v	1FL 4x16	2FL 3/4x6	1)	1)	1)	
18	NB85-18 + M8-530	50	68	96	190	195	2923	1238	1685	281	164	117	h+v	1FL 4x16	2FL 3/4x6	1)	1)	1)	
19	NB85-19 + M8-580	55	75	105	190	198	3028	1288	1740	295	175	120	h+v	4Rd 1x16P	2FL 3/4x10	1)	1)	1)	
20	NB85-20 + M8-580	55	75	105	190	198	3083	1288	1795	298	175	123	h+v	4Rd 1x16P	2FL 3/4x10	1)	1)	1)	
21	NB85-21 + M8-650	60	80	115	190	198	3208	1358	1850	316	190	126	h+v	4Rd 1x16P	2FL 3/4x10	1)	1)	1)	
22	NB85-22 + M8-650	60	80	115	190	198	3263	1358	1905	319	190	129	h+v	4Rd 1x16P	2FL 3/4x10	1)	1)	1)	
23	NB85-23 + M8-710	68	93	130	190	198	3378	1418	1960	334	202	132	h+v	4Rd 1x16P	2FL 3/4x10	1)	1)	1)	
24	NB85-24 + M8-710	68	93	130	190	198	3433	1418	2015	337	202	135	h+v	4Rd 1x16P	2FL 3/4x10	1)	1)	1)	
25	NB85-25 + M8-710	68	93	130	190	199	3610	1418	2192	357	202	155	h+v	4Rd 1x16P	2FL 3/4x10	1)	1)	1)	
26	NB85-26 + M8-820	75	100	143	190	199	3775	1528	2247	383	225	158	v	4Rd 1x25P	2FL 3/4x16	1)	1)	1)	
27	NB85-27 + M8-820	75	100	143	190	199	3830	1528	2302	386	225	161	v	4Rd 1x25P	2FL 3/4x16	1)	1)	1)	
28	NB85-28 + M8-820	75	100	143	190	199	3885	1528	2357	389	225	164	v	4Rd 1x25P	2FL 3/4x16	1)	1)	1)	
29	NB85-29 + M8-930	83	113	158	190	199	4050	1638	2412	416	249	167	v	4Rd 1x25P	2FL 3/4x16	1)	1)	1)	
30	NB85-30 + M8-930	83	113	158	190	199	4105	1638	2467	419	249	170	v	4Rd 1x25P	2FL 3/4x16	1)	1)	1)	
31	NB85-31 + M8-990	90	125	172	190	199	4220	1698	2522	434	261	173	v	4Rd 1x25P	2FL 3/4x16	1)	1)	1)	
32	NB85-32 + M8-990	90	125	172	190	199	4275	1698	2577	437	261	176	v	4Rd 1x25P	2FL 3/4x16	1)	1)	1)	
33	NB85-33 + M8-990	90	125	172	190	220	4494	1698	2796	457	261	196	v	4Rd 1x25P	2FL 3/4x16	1)	1)	1)	
34	NB85-34 + MI10-600	110	150	220	230	230	4384	1533	2851	475	276	199	h+v	4Rd 1x35P	4Rd 1x16P	1)	1)	1)	
35	NB85-35 + MI10-600	110	150	220	230	230	4439	1533	2906	478	276	202	h+v	4Rd 1x35P	4Rd 1x16P	1)	1)	1)	
36	NB85-36 + MI10-600	110	150	220	230	230	4494	1533	2961	481	276	205	h+v	4Rd 1x35P	4Rd 1x16P	1)	1)	1)	

Remarks :

- 1) Details on request
- 2) Motors "M...." are PLEUGER rewindable motors. Motors "FR..." are FRANKLIN canned-type motors.  
Motor selection for water temp. 20 °C and velocity at motor surface ≥ 0,2m/sec. Motor leads must be submerged.